



AUSTRALIA



Swinburne Sydney postgraduate degrees

_2024



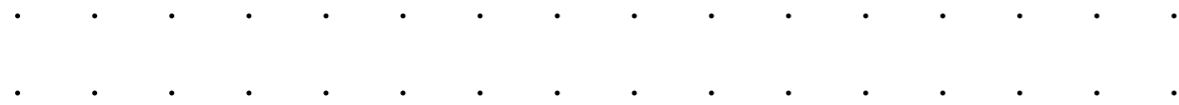
[Q swinburne.edu.au/sydney](https://swinburne.edu.au/sydney)

Become a next generation leader

At Swinburne, we're reinventing the way you'll learn, grow and succeed. With real industry experience opportunities available in many Swinburne postgraduate degrees, along with cutting-edge courses co-created with industry experts.

We are a university for the ambitious. When you join us, you'll meet the next generation of thinkers, creators and innovators. Build your network, make connections and take the next step in your career – whether in Australia or around the globe.

Upgrade yourself and the world, now.



Contents

About Swinburne

Why choose Swinburne?	4
Why Swinburne Sydney?	6
Meet some of our staff	8
Our rankings	9
Living in Sydney	10
Sydney: One of the most student-friendly cities	12
Swinburne campuses	14
University Medal	15
Our student testimonials	16
We prepare you for work	18
Scholarships	19

Our courses

Master of Information Technology	20
Master of Information Technology (Professional Computing)	22
Master of Data Science	24
Master of Construction and Infrastructure Management	26
Postgraduate Qualifying Program	28

Further information

How to apply	30
Other information	31



Why choose Swinburne?

With a degree from Swinburne, you can go anywhere in the world.

Sydney, London, Singapore, New York, Hong Kong. Our graduates are spread around the globe and work for some of the most dynamic organisations, from startups to not-for-profits to multinationals.

A degree from Swinburne means you'll have the prestige of a globally renowned university paired with the confidence that comes from genuine workplace experience.

When you graduate, you'll become one of thousands of Swinburne graduates around the world who are writing their own success stories.

And that's all because a degree from Swinburne sets you up for life.

TOP 250 globally	We rank in the top 250 universities worldwide <small>THE World University Rankings 2024</small>
TOP 1% globally	We are in the Top 1% of the universities worldwide <small>QS World University Rankings 2024</small>
★★★★★	For teaching quality, skills development, and learner engagement <small>The Good Universities Guide 2024</small>
#43 globally	We rank in the top 50 universities under 50 years old <small>THE Young University Rankings 2023</small>

In demand and paid more

Overall PG employment	Business	Information Technology	Engineering
90.5%	A\$79.5k	85%	89%
of our graduates found employment within 4 months of finishing their course.	is the median salary our graduates earn one year after finishing their course.	of our graduates found employment within 4 months of finishing their course.	of our graduates found employment within 4 months of finishing their course.

Our grads work for the biggest and best

- North And South America**
Tesla, Microsoft, Amazon, Deloitte, Salesforce, Morgan Stanley, Pfizer, Goldman Sachs, PayPal, Meta.
- Europe**
Diageo, PwC UK, University of Cambridge, British Airways, Deloitte UK, Google, American Express, HSBC, Adidas, IBM.
- Asia**
Ernst & Young, Shell, Intel, Nokia, Apple, Accenture, IBM, Microsoft, Dell, Telstra.
- Africa and Middle East**
Qatar Airways, Accenture, BHP, Fujita Corporation, Etihad Airways, First Abu Dhabi Bank (FAB), Emirates, Ernst & Young, Cisco, Zenith Bank International.
- Australia/Oceania**
NAB, IBM, NBN Australia, Australia Post, Telstra, ANZ, Qantas, Deloitte, Commonwealth Bank, AGL Energy, Woolworths Group, Virgin Australia, KPMG.

Sources: Graduate Outcomes Survey 2020-2022, and LinkedIn.

Why Swinburne Sydney?



1 Location

Swinburne Sydney is located in the City of Parramatta – the second largest city in New South Wales. Parramatta's development provides a variety of opportunities for employment, housing, schools, and higher education. It is one of the most diverse, multicultural, and fastest-growing cities in Australia. Visit cityofparramatta.nsw.gov.au/visiting

Industry-aligned courses

At Swinburne Sydney, our courses provide the practical, theoretical and conceptual skills to prepare you for every stage of your career. Whether you're just starting out or moving into a leadership role, by the time you graduate you'll have the knowledge and skills you need for success.



2



3 Educational leaders

Swinburne's reputation for superior education and research means we attract highly qualified academics and educational leaders. You'll learn from those who are at the top of their fields with extensive experience in industry and teaching. Our committed and passionate academics and support staff recognise the expectations of 21st century students as well as the cross-cultural differences and challenges that may affect them.

Personalised learning

Our small class size, quality teachers, innovative learning spaces, and teaching technologies provide an exceptional learning experience. The learning environment supports students in all aspects of their learning. Our tutorials offer students the opportunity to interact with their peers and the tutor, while they can also learn about assessment requirements and receive assistance.

4



5 Friendly learning environment

The campus culture, teaching and support staff provide a friendly learning environment. Most of our staff and students know one another and interact outside the classroom using teaching technologies. The learning environment provides a unique learning experience for students.



Facilities and services

Swinburne Sydney provides a variety of services to support your study and wellbeing, including careers and employment, academic advice, counselling, confidential International Student Advisory, computer labs, library, disability support, campus wi-fi and prayer room.

6



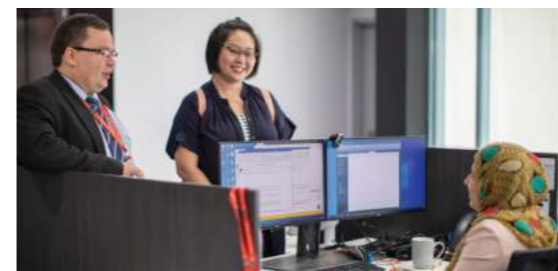
7 Student engagement

Throughout the year, students can participate in social events. These events are co-created in consultation with student groups, and recognise staff and student diversity.

Strong industry connections

Our strong links with business and industry means you'll graduate with the skills that employers are seeking. We partner with leading Australian and global organisations to offer students an internship experience. Additionally, students have the chance to network with thought leaders and professionals from various industries who are invited as guest lecturers and speakers.

8



9 We act on your feedback

We encourage students to play a key role in enhancing all aspects of learning. Through feedback, we implement changes and inform students about the improvements. Our partnership with students is genuine and we empower students to provide feedback at any time.

End-to-end student support

Swinburne Sydney provides a range of academic and non-academic support to students. We assess student needs and develop programs to get them ready for success. Our student services offer students and staff a vibrant and collaborative atmosphere for holistic learning and development.

10



11 Student mentoring

We have one of the best mentoring programs for students. Student mentors provide support to each student prior to their start as well as during their studies. Our student mentors have improved student engagement and success rates.

International Student Advisers

Living and studying away from your home country can be challenging. That's why, at Swinburne Sydney, we have dedicated International Student Advisers available to help you at any time. Whether you've had an accident, or need advice on jobs, visas, or accommodation, Swinburne's International Student Advisers are here to help you – no matter what issues you face.

12



Meet some of our staff

Learning from those who are at the top of their fields with extensive experience in industry and teaching is something you can expect when studying with Swinburne Sydney. We have a reputation for having highly qualified academics, mentors, and leaders that lead by example to create an environment where students excel both academically as well as professionally after graduation.



Dr Mary Amponsah
Development Economics and International Economics expert

"Encourage and foster a collaborative learning environment where students engage in problem-solving task, develop the ability to master and apply economic principles in their personal and professional lives, and in the development of their communities. For me, there is nothing more satisfying than seeing my students play a leading role in community development."



Dr Morteza Pourmohamadi
Design Computing and Cognition expert

"I passionately share my 25 years of professional experience with my students, enriching their educational journey through real-life projects. Our dynamic classroom environment transcends the limitations of prescribed slides and pre-recorded videos. It is this unique career-oriented curriculum that sets our university apart."



Dr Ayesha Ashfaq
Cloud Computing and Security expert

"I try to upskill students by incorporating a hands-on approach to teaching. I am also inclined to educate the students on the evolving expectations of the IT industry and mentor them to get industry ready."



Dr Andy Asquith
Public Sector Management and Change Management expert

"My teaching aim is to connect theory with the real world, opening the door for students to realise that they have a considerable knowledge base upon which to build. Learning is meant to be fun, with interactive engagement of students in class is key to both understanding and building confidence."



Dr. Bushra Naseem
Environmental science and sustainability expert

"I feel that environmental issues are of a great concern of present time. I am passionate in preparing construction professionals to understand the needs of environmental sustainability and implement the best practices in industry. I believe sustainability is a responsibility that everyone shares to make this planet a better place for current and future generations."



Roshanak Amini
Big Data expert

"An important part of my teaching approach is to engage students in learning and facilitate interaction. I facilitate learning by supporting students to achieve their goals."

Our rankings

QILT Student Experience Survey

Swinburne ranks in the top 10 universities in Australia and above the national average for teaching quality.* This reflects the strong commitment our community of educators and support staff have to delivering high-quality learning and teaching.

#1 Computing and Information Systems	<p>among Sydney universities for skills development.*</p> <p>Other notable accomplishments include: No. 3 in Sydney for overall experience, teaching practices, and support services*</p>
#1 Engineering	<p>among Sydney universities for teaching practices.*</p> <p>Other notable accomplishments include:</p> <ul style="list-style-type: none"> • No. 2 in Sydney for staff: student engagement* • No. 3 in Sydney for overall experience, and skills development.*

*QILT: Student Experience Survey 2021 and 2022



Sujan
Master of Construction and Infrastructure Management student

"Swinburne Sydney has dedicated and passionate teachers who strive to provide high-quality education to students, making a significant impact on our overall university experience. Also, we have an exceptional coordinator, who is always there to support the students in creating a harmonious and efficient learning environment."

Living in Sydney

Living costs

As a student residing in Sydney, it is recommended by the Australian Government that you have a minimum of A\$24,505 per person per year to cover your living expenses, including accommodation, food, utilities, and entertainment. Tuition fees or airfares are not included and additional costs may apply for extra family members.

This cost of living can differ depending on your unique lifestyle and necessities. To assist you in estimating the expenses of your desired lifestyle, the Australian Government provides a helpful tool – the Cost of Living Calculator. It is available on their website and designed to prompt you to think about your spending habits and provide you with a general estimate of potential costs in Australia. As a part of your financial planning, we suggest accessing costofliving.studyaustralia.gov.au/ and follow the steps provided.



Visa requirements

For detailed information on the requirements for prospective student visa applicants and any family members accompanying them visit immi.homeaffairs.gov.au/visas/getting-a-visa/visa-listing/student-500

Finding a home

When choosing accommodation in Sydney, the most important thing is to feel secure and happy, so you can focus on your studies and enjoy life. It is a good idea to research all your options before making a decision.

There are different accommodation options available to international students in Sydney. Each type of accommodation has its own unique range of features. Some will align with your preferences and budget more than others. There's a type of accommodation to suit everyone!

For more information visit studyaustralia.gov.au

	Private rental accommodation	Share accommodation	Homestay
Description	Renting your own unfurnished apartment or house	Sharing a rental house or apartment with other students	Living in a furnished bedroom as a guest in a local family's home
Contract	Minimum 6 months	Varies	Minimum four weeks
Advantages	<ul style="list-style-type: none"> Independent Can choose what you want 	<ul style="list-style-type: none"> Cheaper than other options Independent Meet new friends 	<ul style="list-style-type: none"> Learn about the Australian lifestyle Family-orientated environment
Disadvantages	<ul style="list-style-type: none"> Must buy furniture May have to find share mate Very difficult to break lease 	<ul style="list-style-type: none"> Living with people who you don't know and may have a different lifestyle from you 	<ul style="list-style-type: none"> Limited privacy Have to fit in with the family's lifestyle
Procedure	<ol style="list-style-type: none"> Locate property Inspect property Lodge application Sign the lease contract Connect utilities Move in 	<ol style="list-style-type: none"> Locate property Inspect property Sign the lease contract Move in 	<ol style="list-style-type: none"> Apply online Inspect property Pay fees Move in

Amazing weather

Sydney has warm summers, sunny springs, crispy leaved autumns and cool winters. There's something for everyone with snow in the mountains and sun at the beaches.

+100 beaches

lining the coast, Sydney's cosmopolitan beach lifestyle soaks into the whole city. Enjoy swimming, surfing, snorkelling, water sports and coastal walks.

#1

Australia's safest city - and fourth safest in the world
The Economist Safe Cities Index 2021

TOP 10

Best student cities worldwide
QS Best Student Cities 2024

Sydney, Australia

Sydney is home to the Sydney Opera House, Sydney Harbour Bridge and stunning beaches. It is the perfect destination to live, study and work.

Swinburne Sydney is located in Parramatta – only 30 minutes by train from Sydney's city centre. Parramatta is one of Australia's fastest-growing cities with people from many cultures and ethnicities making it their home. It is also a major business and commercial centre – bustling with retail shops and global eateries – and a popular destination for international students.

City of Parramatta has more than 300 beautiful parks and reserves for students to enjoy. And, if that's not enough, there's a vibrant arts and culture scene, with the annual Sydney Festival, Winterlight, and Parramasala.



Sydney: One of the most student-friendly cities

Studying at Swinburne Sydney means studying in one of the world's best student cities.*

Sydney is one of Australia's top cities and the world's 7th best for students. That's according to the QS Best Student Cities Ranking 2024, as voted by real students. With over 5 million people and more than 275 different languages spoken[†], you'll find yourself completely at home. Swinburne Sydney is 30 minutes by train from the Sydney CBD and not far from Parramatta's many interesting sights! Just have a look below.



Key

- | | |
|--|--|
| 1 Swinburne Sydney | 10 Parramatta River Walk 1.8km |
| 2 Parramatta Interchange - Bus station 1 min | 11 Parramatta Park 1.4km |
| 3 Parramatta Railway Station - Train station 1min, 30min to the Sydney CBD | 12 CommBank Stadium 2km |
| 4 Westfield Parramatta 46m - 1 min | 13 Rosehill Gardens Racecourse 2km |
| 5 Parramatta Town Hall 350m - 4m walk | 14 Westmead Hospital 3.6km |
| 6 Parramatta Square 550m - 7 min | 15 Westmead Private Hospital 4km |
| 7 Harris Park 750m - 10 min | 16 The Children's Hospital at Westmead 4.4km |
| 8 Parramatta Ferry Wharf 1km - 13min | 17 Accor Stadium 8.6km |
| 9 Powerhouse Parramatta 1.3km (under construction, expected to open in 2024) | 18 Bicentennial Park 9.6km |

— City-Swinburne- train line
 — Other train lines
 All distances are to Swinburne Sydney, by or .
— Stage 1
 — Stage 2
 Parramatta Light Rail line (under construction, expected to open in 2024)

*QS Best Student Cities 2024
 †NSW website: nsw.gov.au/about-nsw/key-facts-about-nsw

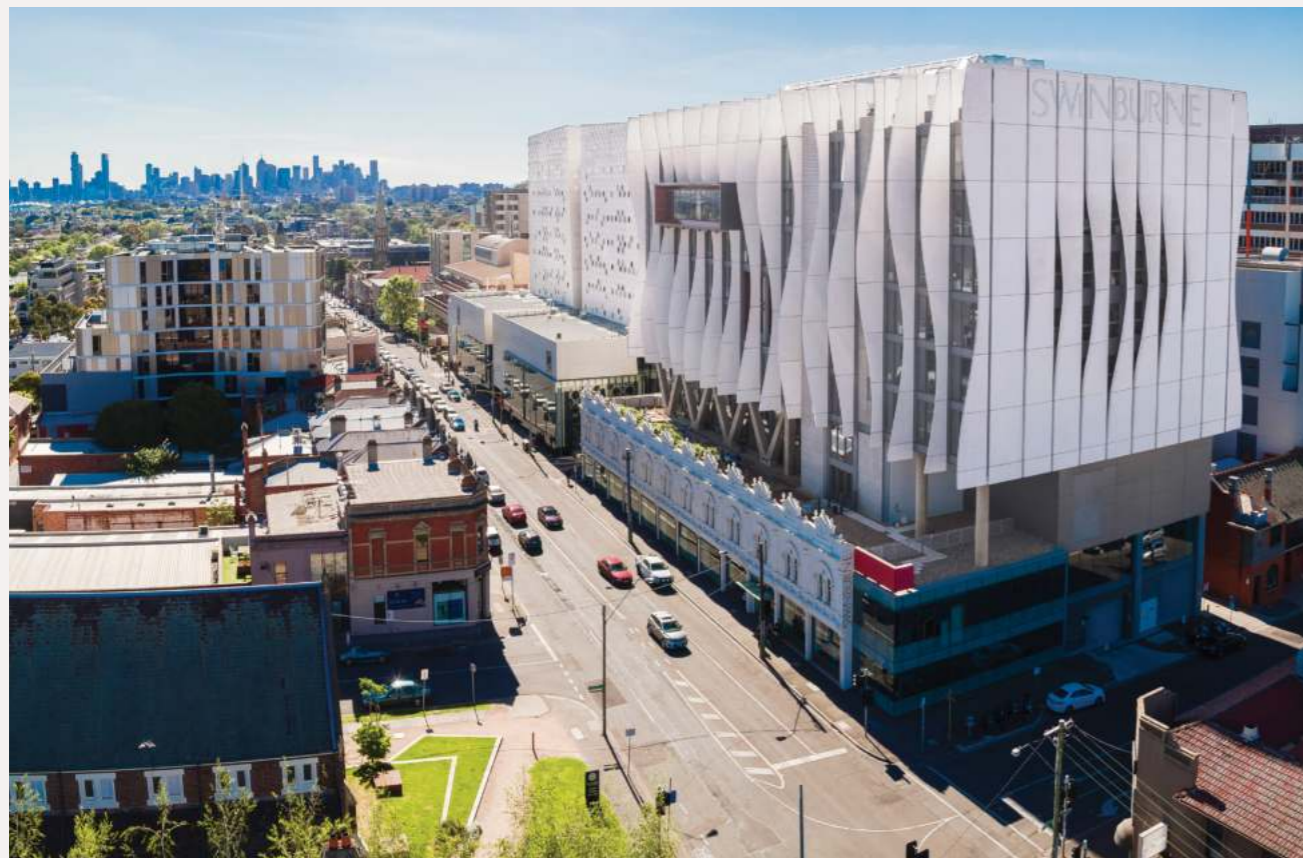
Swinburne campuses

Melbourne

Located in the leafy inner-city suburb of Hawthorn, Swinburne's main campus is just 10 minutes by train from Melbourne's CBD, and offers the perfect mix of state-of-the-art facilities and diverse learning environments to support you in your studies.

Swinburne's Hawthorn campus offers a wide range of study levels and learning options, from bachelor degrees to PhDs, diplomas to short courses and even single units.

Nestled alongside the Glenferrie Road shopping precinct, students have access to cafés, a sport and recreation centre, a cinema, grocery stores and shops of every kind to cater for your needs.



Malaysia

Swinburne's Malaysian campus is located in Kuching, the capital city of the East Malaysian state of Sarawak. Kuching is known for its clean environment, relaxed lifestyle, green spaces and friendly people.

The campus is conveniently located within walking distance of two extensive shopping malls, a cinema complex, banks and restaurants.

Our Malaysian campus offers courses in business, engineering, information and communication technology, design and science.

University Medal

Swinburne University Medal is a prestigious award that recognises the most outstanding students at an undergraduate, postgraduate and research doctorate level.

Uma Laghu, a Master of Construction and Infrastructure Management graduate is the 2022 recipient medal for her excellence and impact in the construction management field.

Uma completed a Master of Construction and Infrastructure Management at Swinburne Sydney and now works as a civil engineering draftsman, a career she loves because of her interest in architecture and sustainable construction methods.

As a Nepalese woman and the first in her family to attain a postgraduate education, Uma is also passionate about raising aspiration for women in STEM fields.

"My success will have generational impact on my family and young women who aspire to become engineers," she says.

During her time at Swinburne, Uma took on a student mentor role, which she says has equipped her with vital skills for mentoring other women in the construction industry.

"My professional purpose statement, which I developed by the end of the course, is to become a female role model in the construction management profession who applies and champions the application of ethical and sustainable construction methods and practices."

Uma says being the recipient of this medal is a significant achievement for her and her family.

"I am very grateful to my parents, friends, and the staff at Swinburne who have supported me while completing the course. The medal is a testament that women can shine and achieve their dreams."



Uma

Master of Construction and Infrastructure Management graduate and recipient of University Medal



Uma Laghu with the University Medal and Professor Pascale Quester, Vice-Chancellor and President of Swinburne.

Scan the QR Code and watch Uma's University Medal achievement, a prestigious award recognizing the most outstanding students across Swinburne.



Our student testimonials

What some of our students and graduates say about Swinburne Sydney.



Quang
Master of Master of Information Technology [Professional Computing] student

"Swinburne's commitment to high-quality education shines through its innovative curriculum. It fosters practical skills for real-world application, alongside enriching campus experiences, nurturing a vibrant and supportive student community."



Manisha
Master of Information Technology student

"Swinburne's industry connections and hands-on learning approach gives me a thorough education and a competitive edge in the software development industry."

Sharon

Master of Construction and Infrastructure Management student

"Swinburne Sydney's exceptional teaching quality, dedicated academics, top-notch student services, and collaborative environment create a memorable and enriching educational journey, ensuring student success and personal growth."



Mohit
Master of Data Science student

"Swinburne Sydney provides me with immense knowledge and industry exposure. The environment of education is quite friendly, and interactions with our teachers and mentors provide an edge in learning."



Chamandeep
Master of Information Technology student

"Swinburne has teaching staff with excellent professional knowledge and skills. The industry projects are giving me real experience. I am enjoying studying since I am developing communication and collaboration skills."



Mansi
Master of Construction and Infrastructure Management graduate

"The guidance by Swinburne Sydney team has been instrumental in shaping my career path. I am excited to embark on this new pivotal role with knowledge and skills which I gained during my time at the University."



Aditi
Master of Construction and Infrastructure Management student

"The Learning Skills workshop of Swinburne helped me get started on assignments and provided valuable guidance on research techniques. The enthusiastic support of the staff towards co-curricular activities motivated me to get involved and become a more well-rounded student."



"I chose Swinburne Sydney to improve my data analytics skills because of the university's global reputation in the technology field."

The staff and environment at Swinburne Sydney have been excellent, and with the help of a part-time job, I am excited about the prospects of having a successful career in the future."

Long
Master of Data Science student



Subham
Master of Information Technology student

"Swinburne Sydney provides the perfect solution to my goals. Swinburne's emphasis on hands-on experience, and internship opportunities opens the door to exciting career opportunities and provides valuable growth opportunities."



Satish
Master of Construction and Infrastructure Management graduate

"Swinburne's Master of Construction and Infrastructure Management has helped me to get a job in my area of study. The knowledge and skills I have gained is helping me into my role in engineering profession."

We prepare you for work

From experiences you'll be proud to put on your résumé, to advice and workshops on applying for jobs, Swinburne offers it all.

Real industry experience

All master degree students are guaranteed the opportunity to gain real industry experience. And since we've been providing this to our students since 1963, we know the best way to build it into our courses. This is how we make sure that you'll become the next generation talent our workforce needs.

Swinburne collaborates with established organisations and companies like National Australia Bank (NAB), PricewaterhouseCoopers (PwC), IBM and more – because we aim to connect you to your career faster.

Internships

Internships are part-time opportunities with established organisations that provide valuable Australian work experience. They usually take place over the course of a study term. If you take an internship as an elective unit, your course length remains the same. It's also a great addition to your résumé and will help you stand out in your future job search.

Industry-linked projects

Many of our master degrees are embedded with industry-linked projects. You'll collaborate with fellow students in finding solutions to real industry issues, present your ideas and receive feedback, just like in the workplace. In many cases, you'll interact with working professionals and experts in your field. Study areas that offer this option include IT, construction, data science, and business.

Careers and employment services

Our Jobs and Careers Program provides a range of free career services for current students and recent graduates. The program also offers a range of additional services to assist students with employment, including:

- résumé-checking
- interview practice sessions
- on-campus employment fairs
- job workshops
- access to free online short courses provided by LinkedIn Learning.



Scan for more info



Adobe Creative Campus

We're the first university in Australia to become one. Whether it's creating content, solving problems or creating a presentation with impact, you'll know what to do, when to do it and how. Get free access to the full Adobe Creative Cloud suite (that's 20+ apps) and free consultations with our Adobe Digital Coaches!



Scan for more info



Scholarships

With an international scholarship, you could get up to 30% off your tuition fees.

When you apply for a Swinburne course, we'll automatically consider you for an international scholarship. If you are successful, we'll advise you of both your course application and scholarship success by email.

George Swinburne International Excellence Scholarship

Up to 30% off your tuition fees for the standard course duration.

This is a merit-based scholarship that is awarded to students demonstrating academic excellence in their previous studies. If eligible, you can receive this scholarship for the standard duration of your qualification with Swinburne.

Women in STEM International Scholarship

30% off your tuition fees for the standard course duration.

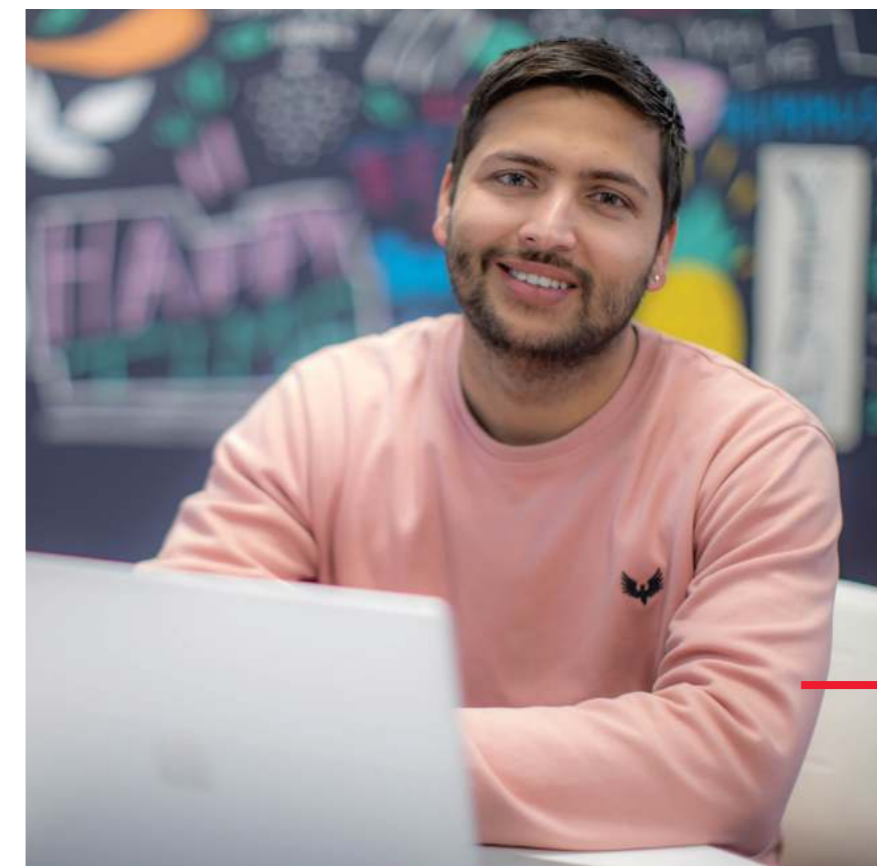
This merit-based scholarship is awarded to female international students applying for a course in an engineering, science or technology-related course offered by the School of Engineering or the School of Science, Computing and Engineering Technologies. Applicants must demonstrate academic excellence in their previous studies. If eligible, you can receive this scholarship for the standard duration of your qualification with Swinburne.

Swinburne International Scholarship

Up to 20% off your tuition fees for the standard course duration.

This scholarship is offered to international students commencing their undergraduate or postgraduate (coursework) studies at Swinburne. If eligible, you will receive the scholarship for the standard duration of your qualification with Swinburne.

For more information, visit swinburne.edu.au/sydney/about/scholarships or by scanning the QR code.



"Swinburne is best known for its excellent education and cultural diversity. Also, the learning environment is so good for the students, as all the staff members treat them with care."

Sushil

Master of Construction and Infrastructure Management student

Master of Information Technology

The Master of Information Technology provides the knowledge and skills required to design, develop and maintain complex systems using state-of-the-art technologies and methodologies. It includes a general introduction to ICT and provides the opportunity for students to gain advanced specialist skills in areas such as networks, software development, and information systems analysis and management.

Students also have the opportunity to apply their skills through industry-related project work, including industry-linked projects for real clients. This project work can demonstrate students' skills and knowledge to potential future employers.

Scholarship opportunities

When you apply for this course, we'll automatically consider you for an international scholarship. If you are successful, we'll advise you of both your course application and scholarship success by email.

For more information on scholarships visit swinburne.edu.au/sydney/about/scholarships

Aims and objectives

Upon completion of the Master of Information Technology course, graduates will be able to:

- demonstrate a coherent understanding of the fundamental aspects of ICT solutions including the use of a range of tools and techniques for requirements capture, solution design and construction, and project management
- apply knowledge of research principles and methods to plan and execute a piece of research with independence, demonstrating the ability to analyse, process and synthesise complex information
- communicate information proficiently to a variety of audiences, demonstrating scholarship of ICT foundations, as well as recent advances in the ICT field within the context of specialisation (Data Analytics, Software Development and Cyber security)

Course at a glance

Duration	Two years full-time
Intake	June and September 2024
Tuition fee	A\$40,240 (annual fee for 2024)*
CRICOS code	001742J
Entry requirements	Applicants are required to have completed one of the following: <ul style="list-style-type: none"> • a bachelor degree (or higher award) in any discipline from a recognised higher education institution or equivalent; or • the Graduate Certificate or Graduate Diploma of Information Technology; or • the Postgraduate Qualifying Program (PQP).
English language requirements	Satisfactory completion of one of the following: <ul style="list-style-type: none"> • IELTS overall band of 6.5 (Academic Module) with no individual band below 6.0 • Swinburne's English for Academic Purposes (EAP 5 Advanced level) with overall 70%, all skills 65% or above • or equivalent measures available at swinburne.edu.au/sydney/about/english-language-requirements/

*Fees displayed are relevant to 2024 and are subject to annual review. Fees are based on a student's study load in each semester. Please see website for more information.

• apply a coherent and advanced knowledge of Information Technology, critically evaluate trade-offs, and create innovative solutions to complex problems with intellectual independence	•	•	•	•	•	•	•	•	•	•	•	•	•	•	•	•	•	•	•	•
• demonstrate personal discipline, scholarship of the field, critical thinking, and judgment by completing a substantial capstone project using contemporary techniques	•	•	•	•	•	•	•	•	•	•	•	•	•	•	•	•	•	•	•	•
• reflect on, and take responsibility for their own learning, manage their own time and processes effectively by regularly reviewing personal performance as a means of managing continuing professional development.	•	•	•	•	•	•	•	•	•	•	•	•	•	•	•	•	•	•	•	•
	•	•	•	•	•	•	•	•	•	•	•	•	•	•	•	•	•	•	•	•
	•	•	•	•	•	•	•	•	•	•	•	•	•	•	•	•	•	•	•	•

Course overview

To qualify for the award of Master of Information Technology students must complete 14 units of study (200 credit points) as follows:

- 6 IT core units (75 credit points)
- 1 Specialisation (100 credit points) consisting of:
 - 2 core units (25 credit points)
 - 4 technology projects (75 credit points)
- 2 electives (25 credit points)

Units of study

Core units

- Complete all six units (75 credit points):
- COS60004 Creating Web Applications
 - COS60009 Data Management for the Big Data Age
 - COS70004 User Centred Design
 - COS80001 Cloud Computing Architecture
 - COS80021 Web Application Development*
 - COS80023 Big Data*

Specialisations

Complete one of the following specialisations (100 credit points):

Data Analytics

- COS60008 Introduction to Data Science
- COS60010 Technology Inquiry Project
- COS60011 Technology Design Project
- COS70008 Technology Innovation Project* (25 credit points)
- COS80025 Data Visualisation
- COS80029 Technology Application Project* (25 credit points)

Software Development

- COS60010 Technology Inquiry Project
- COS60011 Technology Design Project
- COS70006 Object-Oriented Programming
- COS70008 Technology Innovation Project* (25 credit points)
- COS80022 Software Quality and Testing
- COS80029 Technology Application Project* (25 credit points)

Cyber security

- COS60010 Technology Inquiry Project
- COS60011 Technology Design Project
- COS70008 Technology Innovation Project* (25 credit points)
- COS80029 Technology Application Project* (25 credit points)
- COS80013 Internet Security
- ICT60001 Operating System Management

Elective units

Complete any two elective units (25 credit points):

- COS80013 Internet Security
- ICT80004 Internship Project
- COS80025 Data Visualisation
- COS70006 Object Oriented Programming
- CYB60004 Network and Cyber security Frameworks

*Outcome units - matched exemptions are generally not granted for higher education outcome units.

Career opportunities

This course provides graduates with knowledge and skills equipping them to undertake professional work at an advanced level in field of Information and Communication Technologies (ICT), and as a pathway for research and further learning.

The Master of Information Technology provides graduates from non-IT backgrounds a path to move into a career in IT.

Industry leaders

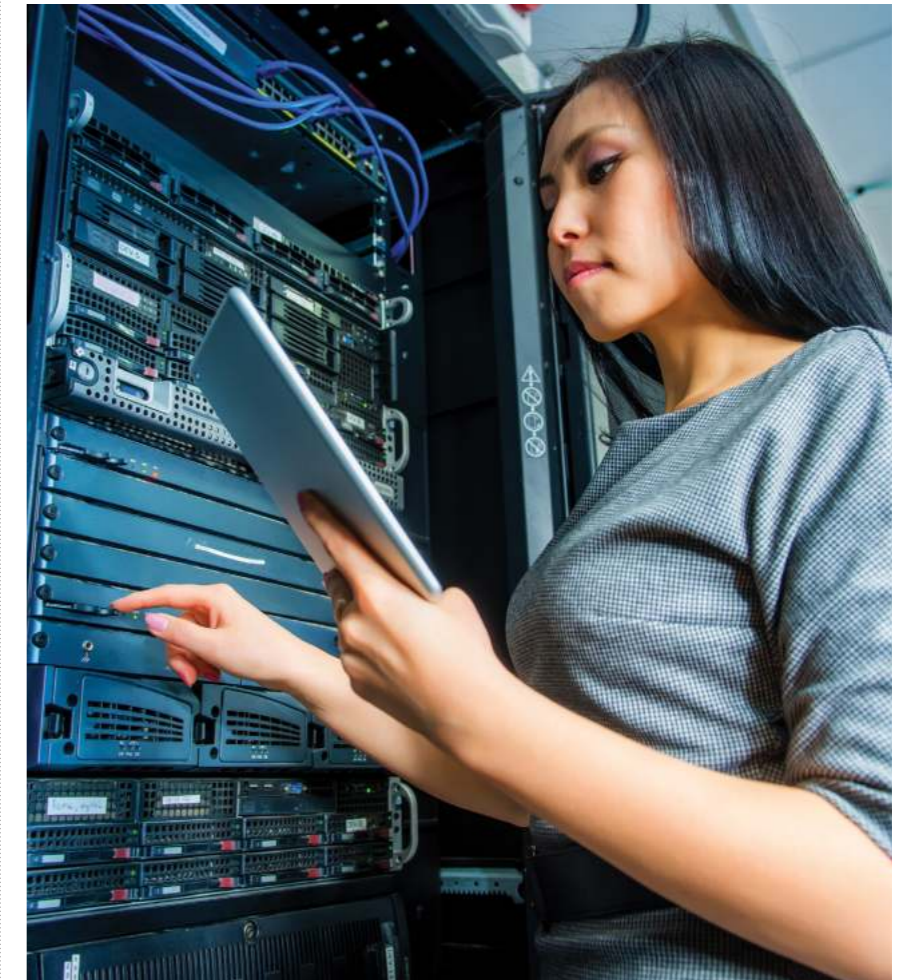
This course is professionally accredited by the Australian Computer Society (ACS).



Swinburne Sydney, a member institution of AWS Academy, offers AWS Academy Cloud Foundations as part of its Master of Information Technology course. AWS Academy Cloud Foundations is a course developed and maintained by AWS.



You can find more information about our Master of Information Technology course at swinburne.edu.au/sydney/mit or by scanning the QR code below.



Master of Information Technology [Professional Computing]

The Master of Information Technology (Professional Computing) course is concerned with the mastery of theoretical knowledge and practical skills related to the design, construction, operation, support and maintenance of Information Technology (IT) solutions.

This course will provide students with advanced skills and state-of-the-art techniques used in the design and construction of IT solutions, as well as research skills needed to assess the effectiveness of IT solution or technology. Students will gain specialist skills and become capable of working with information technology solutions at an advanced level.

Scholarship opportunities

When you apply for this course, we'll automatically consider you for an international scholarship. If you are successful, we'll advise you of both your course application and scholarship success by email.

For more information on scholarships visit swinburne.edu.au/sydney/about/scholarships

Aims and objectives

Upon completion of the Master of Information Technology (Professional Computing) course, graduates will be able to:

- apply knowledge of research principles and methods to plan and execute a piece of research with independence demonstrating the ability to analyse, process and synthesise complex information
- communicate information proficiently to a variety of audiences, demonstrating scholarship of ICT foundations, as well as recent advances in the ICT (Data Analytics, Software Development and Cyber security)

Course at a glance

Duration	Two years full-time
Intake	June and September 2024
Tuition fee	A\$30,180 (annual fee for 2024)*
CRICOS code	061755G
Entry requirements	A recognised bachelor degree in an IT-related discipline covering at least the fundamental knowledge of computer programming, web system development, database, and business applications of computer systems.
English language requirements	Satisfactory completion of one of the following: <ul style="list-style-type: none"> • IELTS overall band of 6.5 (Academic Module) with no individual band below 6.0 • Swinburne's English for Academic Purposes (EAP 5 Advanced level) with overall 70%, all skills 65% or above • or equivalent measures available at swinburne.edu.au/sydney/about/english-language-requirements/

*Fees displayed are relevant to 2024 and are subject to annual review. Fees are based on a student's study load in each semester. Please see website for more information..

Course overview

To qualify for the award of Master of Information Technology (Professional Computing) students must complete 12 units of study (150 credit points) as follows:

- 4 Core units (50 credit points)
- 1 Specialisation 100 credit points

Units of study

Core units

Complete all four units (50 credit points):

- COS70004 User-Centred Design
- COS80001 Cloud Computing Architecture
- COS80021 Web Application Development*
- COS80023 Big Data*

Specialisations

Complete one of the following specialisations (100 credit points):

Data Analytics

- COS60008 Introduction to Data Science
- COS60010 Technology Inquiry Project
- COS60011 Technology Design Project
- COS70008 Technology Innovation Project* (25 credit points)
- COS80025 Data Visualisation
- COS80029 Technology Application Project* (25 credit points)

Software Development

- COS60010 Technology Inquiry Project
- COS60011 Technology Design Project
- COS70006 Object-Oriented Programming
- COS70008 Technology Innovation Project* (25 credit points)
- COS80022 Software Quality and Testing
- COS80029 Technology Application Project* (25 credit points)

Cyber security

- COS60010 Technology Inquiry Project
- COS60011 Technology Design Project
- COS70008 Technology Innovation Project* (25 credit points)
- COS80029 Technology Application Project* (25 credit points)
- COS80013 Internet Security
- ICT60001 Operating System Management

*Outcome units - matched exemptions are generally not granted for higher education outcome units.

Career opportunities

This course provides graduates with knowledge and skills allowing them to undertake professional work at an advanced level in the field of Information and Communication Technologies (ICT), and as a pathway for research and further learning. The Master of Information Technology (Professional Computing) allows IT graduates to further specialise or supplement their knowledge in selected IT areas.

Industry leaders

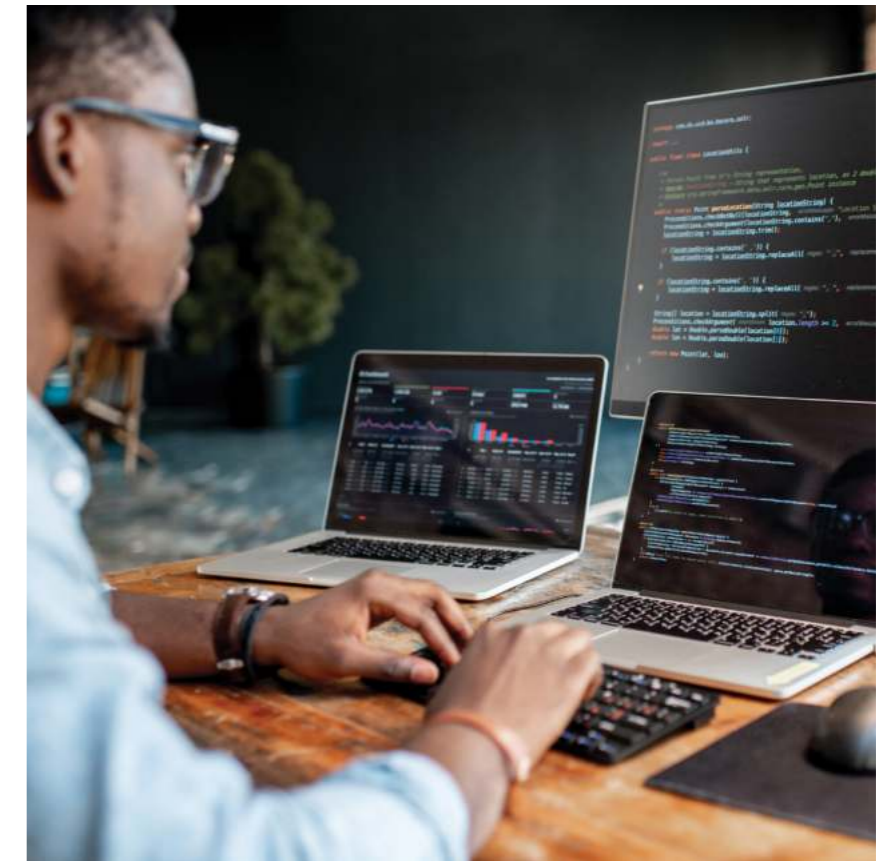
This course is professionally accredited by the Australian Computer Society (ACS).



Swinburne Sydney, a member institution of AWS Academy, offers AWS Academy Cloud Foundations as part of its Master of Information Technology (Professional Computing) course. AWS Academy Cloud Foundations is a course developed and maintained by AWS.



You can find more information about our Master of Information Technology (Professional Computing) course at swinburne.edu.au/sydney-mit-pc or by scanning the QR code below.



Master of Data Science

The Master of Data Science is designed to prepare students to work on the forefront of data-driven decision-making and forecasting.

Build on your existing undergraduate qualification and/or industry experience as you develop an in-depth understanding of activities and processes related to managing, interpreting, understanding and deriving knowledge from large data sets.

In this course, you'll learn how to gain meaningful insight from data obtained from business, government, scientific and other sources. Expand your knowledge and understanding of computer science and data analytics, develop skills in state-of-the-art techniques and contemporary tools covering the entire data management lifecycle.

Scholarship opportunities

When you apply for this course, we'll automatically consider you for an international scholarship. If you are successful, we'll advise you of both your course application and scholarship success by email.

For more information on scholarships visit swinburne.edu.au/sydney/about/scholarships

Aims and objectives

Upon completion of the Master of Data Science course, graduates will be able to:

- demonstrate and apply a coherent understanding of the concepts and practices within the field of Data Science as an effective member of diverse teams in a professional context
- critically analyse various data science scenarios, evaluate the existing knowledge base, and propose and justify effective and/or innovative solutions, including the choice of appropriate technology
- demonstrate personal discipline, scholarship of the field, critical thinking, and judgment by completing substantial projects with industry relevance
- communicate information proficiently to technical and non-technical audiences, including industry practitioners

Course at a glance

Duration	Two years full-time
Intake	June and September 2024
Tuition fee	A\$41,240 (annual fee for 2024)*
CRICOS code	099117B
Entry requirements	Applicants are required to have completed one of the following: <ul style="list-style-type: none"> • a bachelor degree (or higher award) in any discipline from a recognised higher education institution equivalent; or • the Postgraduate Qualifying Program (PQP).
English language requirements	Satisfactory completion of one of the following: <ul style="list-style-type: none"> • IELTS overall band of 6.5 (Academic Module) with no individual band below 6.0 • Swinburne's English for Academic Purposes (EAP 5 Advanced level) with overall 70%, all skills 65% or above • or equivalent measures available at swinburne.edu.au/sydney/about/english-language-requirements/

*Fees displayed are relevant to 2024 and are subject to annual review. Fees are based on a student's study load in each semester. Please see website for more information.

- apply knowledge of research principles and methods to solve diverse Data Science problems from scenarios relevant to science and/or industry and critically reflect on the appropriateness of the solution
- reflect on, and take responsibility for their own learning, manage their own time and processes effectively by regularly reviewing personal performance as a means of managing continuing professional development.

You could work for

National Australia Bank, IBM, Telstra, ANZ and NBN Australia. These are just some places our postgrads have found work.

85%

of Swinburne IT graduates found jobs within 4 months of finishing their course.

QILT: Graduates Outcomes Survey 2020-2022

Course overview

To qualify for the award of Master of Data Science students must complete 200 credit points comprising:

- 12 Core units (175 credit points)
- 2 Elective units (25 credit points)

The Graduate Certificate and Graduate Diploma are exit awards (not by admission).

Units of study

Core units

Complete all 12 units (175 credit points):

- COS60004 Creating Web Applications
- COS60008 Introduction to Data Science
- COS60009 Data Management for the Big Data Age
- COS60010 Technology Inquiry Project
- COS60011 Technology Design Project
- COS70004 User-Centred Design
- COS70008 Technology Innovation Project* (25 credit points)
- COS80001 Cloud Computing Architecture
- COS80023 Big Data*
- COS80025 Data Visualisation
- COS80027 Machine Learning*
- COS80029 Technology Application Project* (25 credit points)

Elective units

Complete two elective units (25 credit points):

- COS70006 Object-Oriented Programming
- ICT80004 Internship Project**
- COS80013 Internet Security
- COS80022 Software Quality and Testing

*Outcome units - matched exemptions are generally not granted for higher education outcome units.
 **Unit available by application only - only one Industry Engagement elective unit may be undertaken.

Career opportunities

Graduates will have skills in state-of-the-art techniques and experience in contemporary tools covering a variety of aspects of the entire data management lifecycle, allowing them to work on the forefront of data-driven decision making and forecasting.

Industry leaders

This course is professionally accredited by the Australian Computer Society (ACS).



Swinburne Sydney, a member institution of AWS Academy, offers AWS Academy Cloud Foundations as part of its Master of Data Science course. AWS Academy Cloud Foundations is a course developed and maintained by AWS.



You can find more information about our Master of Data Science course at swinburne.edu.au/sydney-mds or by scanning the QR code below.



Master of Construction and Infrastructure Management

The Master of Construction and Infrastructure Management aims to prepare graduates for future roles managing people, equipment, materials, technological processes, projects and funds in the design, construction, operation, and maintenance projects of buildings and civil infrastructure works in public and private sectors. This is achieved through the study of advanced management and engineering techniques in the fields of construction, building and maintenance.

Students gain significant knowledge and skills in procurement and project delivery, resource planning and management, project costing, health and safety, and risk management. They also learn about the environmental, financial, legal and contractual considerations associated with project-based industries and responsibility for all personal work outputs.

Scholarship opportunities

When you apply for this course, we'll automatically consider you for an international scholarship. If you are successful, we'll advise you of both your course application and scholarship success by email.

For more information on scholarships visit swinburne.edu.au/sydney/about/scholarships

Aims and objectives

Upon completion of the Master of Construction and Infrastructure Management course, graduates will be able to:

- apply high-level advanced knowledge and skills in Construction and Infrastructure Management practice related to design, construction, operation and maintenance of buildings and civil infrastructure
- plan and execute an independent research project in a relevant Construction and Infrastructure Management topic by applying appropriate research principles, sound methods and research skills

Course at a glance

Duration	Two years full-time
Intake	June and September 2024
Tuition fee	A\$44,240 (annual fee for 2024)*
CRICOS code	088131F
Entry requirements	Applicants are required to have completed one of the following: <ul style="list-style-type: none"> • a bachelor (or higher award) in an approved discipline* from a recognised higher education institution or equivalent degree* Engineering (Civil or Construction), Building, Architecture, Quantity Surveying, Construction Management or other related engineering/technology disciplines assessed to be appropriate; or • the Graduate Certificate of Construction Management.
English language requirements	Satisfactory completion of one of the following: <ul style="list-style-type: none"> • IELTS overall band of 6.5 (Academic Module) with no individual band below 6.0 • Swinburne's English for Academic Purposes (EAP 5 Advanced level) with overall 70%, all skills 65% or above • or equivalent measures available at swinburne.edu.au/sydney/about/english-language-requirements/

*Fees displayed are relevant to 2024 and are subject to annual review. Fees are based on a student's study load in each semester. Please see website for more information.

- reflect on managing practical issues/ complex problems and describing/ developing contemporary and sustainable Construction and Infrastructure Management trends and best practices related to design, construction, operation and maintenance of buildings and civil infrastructure
- investigate, analyse and synthesise complex information, perceptions, problems, concepts and theories of Construction and Infrastructure Management practice to provide rational solutions to composite problems using critical thinking and team-based/ independent judgement in the project-based construction industry

- exercise clear and coherent communication for all professional purposes with specialist and non-specialist audiences including clients, customers, project teams and stakeholders from different disciplines and diverse cultures
- exercise and exhibit a high-level of accountability, autonomy, credibility, ethics, and integrity in all professional responsibilities and personal work outputs.

Course overview

To qualify for the award of Master of Construction and Infrastructure Management, students must complete 200 credit points comprising 15 core units. One capstone unit carries 25 credit points and all other units in the course carry 12.5 credit points.

Units of study

Core units

Complete all 15 units (200 credit points):

- CSM80003 Construction Law and Contract Management*
- CSM80006 Engineering Project Management
- CSM80011 Systems, Processes and Technologies for Construction
- CSM80012 Documentation and Information Management with BIM
- CSM80013 Procurement, Tendering and Contracts*
- CSM80014 Advanced Scheduling and Visualisation-Based Integrated Project Controls*
- CSM80015 BIM and Digital Twins for Sustainable Buildings and Infrastructure* (25 credit points - capstone unit)
- CSM80016 Estimating and Project Costing*
- CSM80017 Managing Quality and Safety in Construction Site Operations
- CVE80001 Research Paper*
- CVE80003 Transport Planning, Modelling and Economics
- CVE80006 Infrastructure Deterioration Modelling
- MME80001 Resource Planning and Management*
- MME80003 Maintenance Management of Buildings and Engineering Assets
- RSK80006 Risk Management in Projects and Engineering Industries

*Outcome units – Units that are nominated as demonstrating the attainment of course learning outcomes at the required AQF level.

Career opportunities

This program will provide graduates with an opportunity to gain advanced theoretical and practical knowledge of construction and infrastructure management principles, procurement and cost analysis.

Graduates can pursue careers as construction managers, project engineers/managers, civil engineers and asset management engineers in a range of industries including consulting engineering, construction, research organisations, private sector, local and other government authorities.



Industry leaders

This course is accredited by the Australian Institute of Quantity Surveyors (AIQS).



You can find more information about our Master of Construction and Infrastructure Management course at swinburne.edu.au/sydney-mcim or by scanning the QR code below.



TOP
175
globally

For engineering and technology

Times Higher Education World University Rankings by Subject 2023

TOP
75

For civil engineering

Academic Ranking of World Universities (ARWU) by Subject 2022



Postgraduate Qualifying Program

The Postgraduate Qualifying Program (PQP) prepares students, who do not meet Swinburne's English language and/or academic entry requirements, to undertake postgraduate study at Swinburne.

Successful completion of the program offers guaranteed entry into the Master of Information Technology or Master of Data Science offered at Swinburne Sydney.

By combining English language training and academic studies, students are equipped with the skills they need to succeed in postgraduate study.

Course at a glance

Duration	Six months
Intake	June and September 2024
Tuition fee	A\$15,440 (total for 2024)*
CRICOS code	0101744
Entry requirements	Satisfactory completion of a three-year post-secondary qualification (equivalent to Australian post-Year 12).
English language requirements	Satisfactory completion of one of the following: <ul style="list-style-type: none"> • IELTS (Academic Module): Overall 6.0 with no individual band below 5.5 • Swinburne English Language Centre: EAP 5 Advanced level with overall 65% and all skills 60% or above • or equivalent measures available at swinburne.edu.au/sydney/about/english-language-requirements/

*Fees displayed are relevant to 2024 and are subject to annual review. Fees are based on a student's study load in each semester. Please see website for more information.

Course overview

To complete the Postgraduate Qualifying Program (PQP) students must complete all four non-award units:

- COM10010 Academic Practices and Communication Skills
- LAL10003 Applied Academic Literacies
- MFP30001 Critical Thinking for Further Study
- MFP30002 Research Techniques for Further Study

Upon completion of the Postgraduate Qualifying Program, students' English competency will be deemed equivalent of IELTS 6.5 to proceed to their master degree destination program.

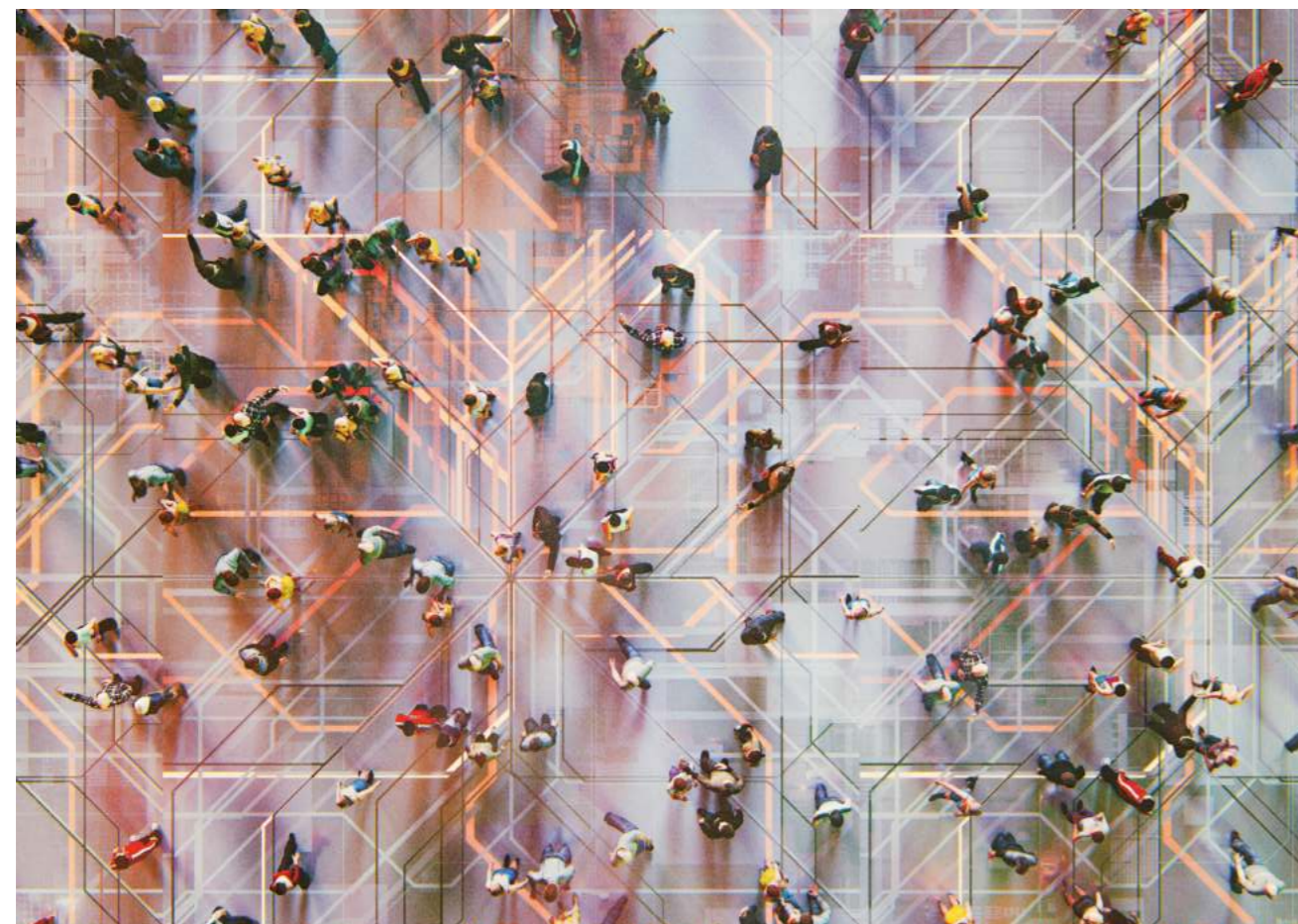
Progression requirement

Students must successfully complete all units to progress to their preferred master degree program. Visit the website for more information about academic progress.

Aims and objectives

The purpose of the Postgraduate Qualifying Program (PQP) is to provide an entry pathway to students who have completed a non-NOOSR (National Office of Overseas Skills Recognition) accredited degree. This program builds on students' prior study to prepare them for entry into a Swinburne postgraduate coursework program.

You can find more information about our Postgraduate Qualifying Program at swinburne.edu.au/sydney-pqp or by scanning the QR code below.



How to apply

Follow these steps carefully to ensure your application is processed properly.

1 Check your start date

Visit swinburne.edu.au/sydney/about/academic-calendar/ to check start dates for intakes. If you're an offshore international student, you should apply at least 3 months before your intake's start date.

2 Gather your documents

- Certified academic transcripts with grading system
- English translations where applicable
- Certified English proficiency test results
- Referee reports (if applicable)
- Course or unit syllabus if you're applying for credit transfer or Recognition of Prior Learning
- Copy of passport (photo page and relevant visa page).

3 Complete your application

Please speak to your registered Swinburne representative in your home country or send your application to applyswin@eca.edu.au

4 Wait for your offer

We will assess your application. If you're successful, you will receive a letter of offer via email. The letter will indicate the:

- course you've been offered
- annual tuition fee*
- course commencement date
- course duration
- deposit you need to pay
- fee for your visa-length overseas student health cover (OSHC)
- conditions to the offer.

*Tuition fees are based on a standard full-time study load per year. All fees are subject to annual review and may be adjusted. Visit swinburne.edu.au/courses/fees/fees-for-international-students/ to learn more about fees. For the indicative fee for your course, see the course entry in this guide or visit the 'Fees' section on the course webpage swinburne.edu.au/courses/find-a-course/

5 Accept your offer

Accept by the date specified in your offer letter. For more information on how to accept your offer, visit swinburne.edu.au/sydney/students/offer/

Note: If you receive a conditional offer, you need to meet the condition(s) outlined in your offer letter.

Visit swinburne.edu.au/study/international/apply for detailed application instructions. • • • •

If you need help with your application, email our application adviser at applyswin@eca.edu.au

You can also speak with a registered Swinburne representative in your home country. Visit swinburne.edu.au/study/international/connect/representatives to search for a list of Swinburne representatives in your country. • • • •

Other information

Applying for credit transfer

What is credit transfer?

Credit transfer is exemption from certain course requirements in recognition for previous study. The term 'credit' is used interchangeably with 'Recognition of Prior Learning', 'advanced standing' and/or 'status' in Australian universities.

How to apply for credit transfer

You can apply for credit transfer by submitting a course or unit (subject) syllabus or other evidence of your skills with your application. You must also indicate on your application form that you're applying for credit transfer.

If your application for credit transfer is successful, your letter of offer will state the updated course duration and the amount of credit for which you have been assessed. If you do not apply for credit transfer when you submit your application, you can do so within the first week of commencing your course. Applications for credit transfer made after this time may not be approved.

To apply, visit advancedstandingswin.eca.edu.au

Applying for your student visa

You will need to obtain an Overseas Student Confirmation of Enrolment (CoE) from Swinburne to complete your student visa application. Your CoE must accompany your application. Visit homeaffairs.gov.au for more information.

Overseas student health cover

All student visa holders must have overseas student health cover (OSHC) for the duration of their study.

Swinburne will arrange your visa-length OSHC membership with our preferred provider, Medibank Private. The OSHC fee will be included with your deposit indicated in your letter of offer. Visa-length OSHC membership is a once-only payment that provides rate protection for the duration of the visa. This means that even if OSHC fees increase during the duration of your visa, you do not have to pay any increase. If you need to extend your OSHC (for example, if you fail some units and need to extend your stay in Australia to complete your course), it is your responsibility to do this directly with the OSHC provider. Additional fees will be charged at time of renewal.

Students with families

If you plan to bring your family to Australia, check if any restrictions apply by contacting the Department of Home Affairs or the Australian diplomatic mission in your country. You will also need to hold OSHC membership for your family.

Children

If you have children between five and 15 years of age who you plan to bring to Australia, you must enrol them in school. Full fees are payable at both government and non-government schools. Visit education.nsw.gov.au to find a complete list of primary and secondary schools in New South Wales and information about fees, applications and enrolment for government schools. Applications to non-government schools must be made directly to the school of your choice.

Note: Your student visa assessment criteria may change if your family is accompanying you to Australia.

Your rights and responsibilities

The Educational Services for Overseas Students (ESOS) Act regulates the education and training sector's involvement with overseas students studying in Australia on student visas.

Visit education.gov.au/esos-framework to read a description of the ESOS framework.

Restrictions may apply if you wish to change your enrolment. Visit swinburne.edu.au/sydney/students/offer/understanding/ for more information about deferring, suspending or cancelling your enrolment.


Visit swinburne.edu.au/courses/fees/fees-for-international-students/refunds/ to read Swinburne's refund provisions, which are outlined in the offer acceptance form.




Swinburne Sydney

1-3 Fitzwilliam St, Parramatta NSW 2150


FURTHER INFORMATION


 +61 2 9160 7788 (worldwide)

 1800 595 333 (within Australia)

 sydneyinfo@swinburne.com.au

 swinburne.edu.au/sydney

 facebook.com/SwinburneSydney

 linkedin.com/school/swinburne-university-of-technology-sydney

The information contained in this course guide was correct at the time of publication, January 2024. The university reserves the right to alter or amend the material contained in this guide. For the most up-to-date course information please visit our website.

CRICOS 00111D RTO 3059 TEQSA PRV12148 Australian University
ISUT0008_202311
